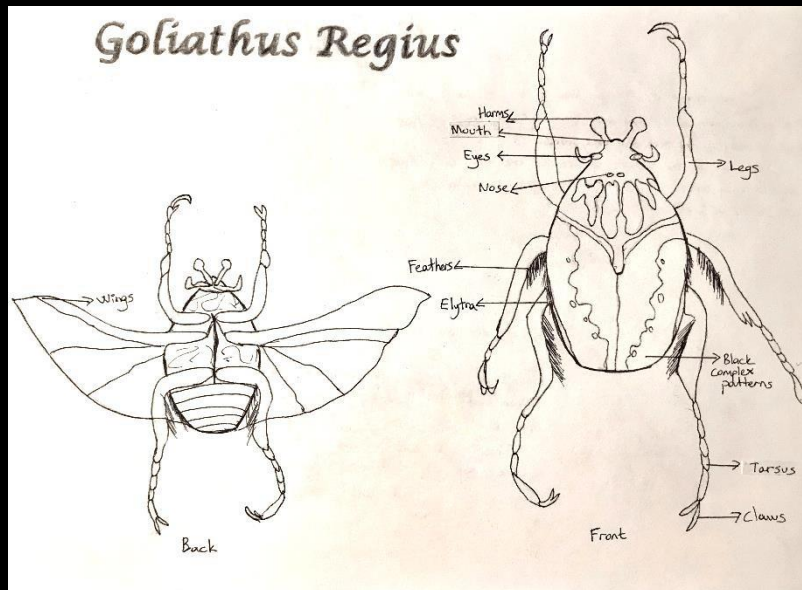
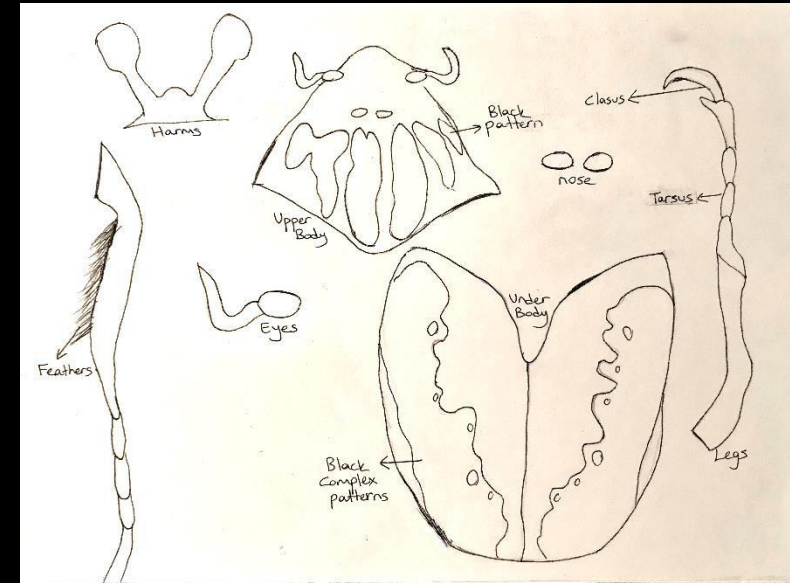




G o l i a t h u s R e g i u s
S k i r t

İpek Karatop

Concept Development – Line & Shapes



Goliathus Regius

Goliathus regius the larvae live in the soil and need the protein-rich diet. They grow very quickly. These beetles feed primarily on the tree sap and fruits.

It is one of the largest species of the genus Goliathus with a body length of 50-115 millimetres in males and of 56-82 millimetres in females.

The body is broad and flat. Elytra are with a complex pattern of black markings, and the pronotum (thoracic shield) has a large black longitudinal stripe.

They have a large and membranous secondary pair of wings. When not in use, these wings are kept completely folded beneath the elytra. Despite its large body, these beetles fly well.

This species present in western equatorial Africa, in Equatorial Guine, Sierra Leone, Ivory Coast, South Burkina Faso, Ghana, Togo, Benin, Nigeria and Liberia.

Legs are long, powerful and black.

Goliathus Regius's larvae

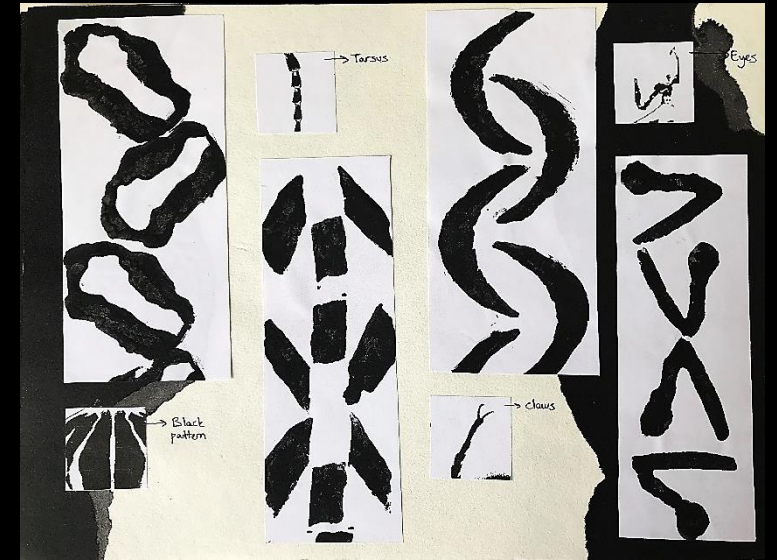
Concept Development – Mark Making & Pattern Development



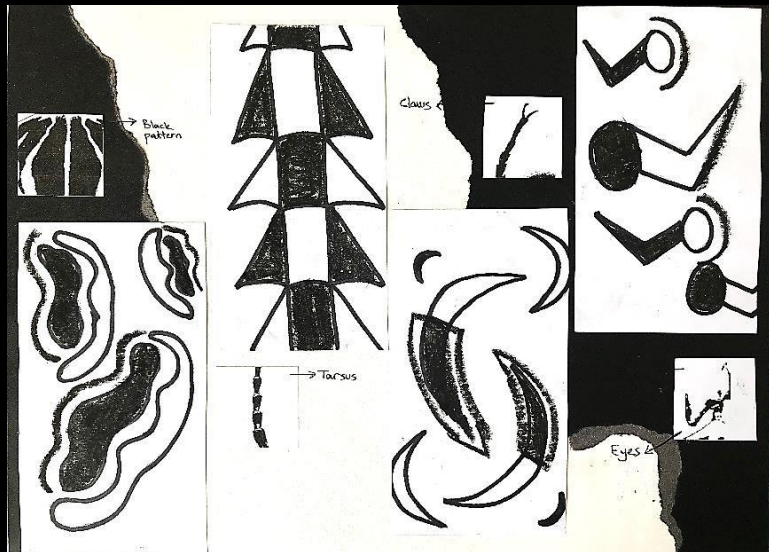
Mark Makings



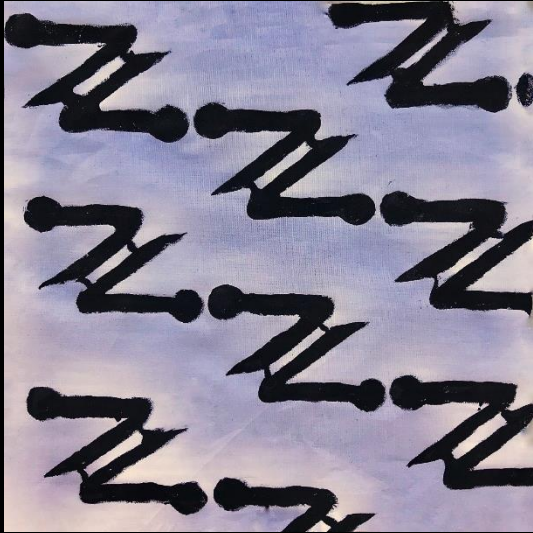
Potato and Eva Patterns



Pattern Developments



Textile Design



Printing



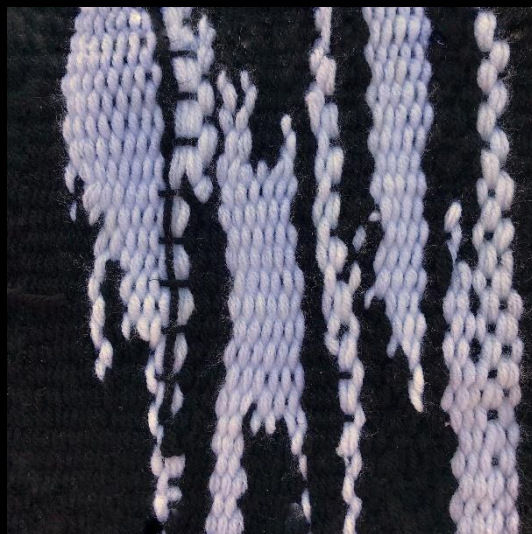
Printing



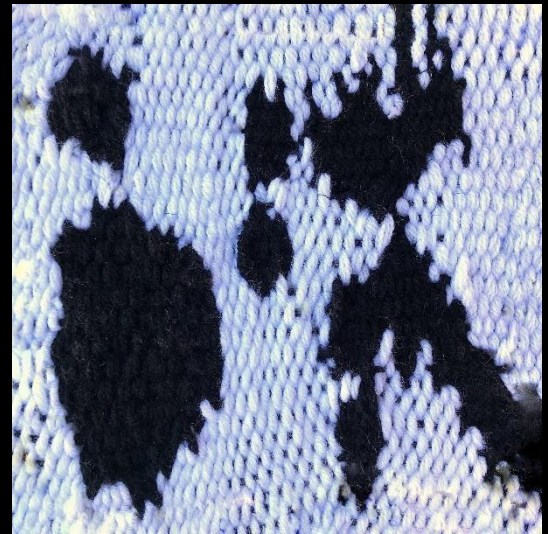
Printing



Embroidery

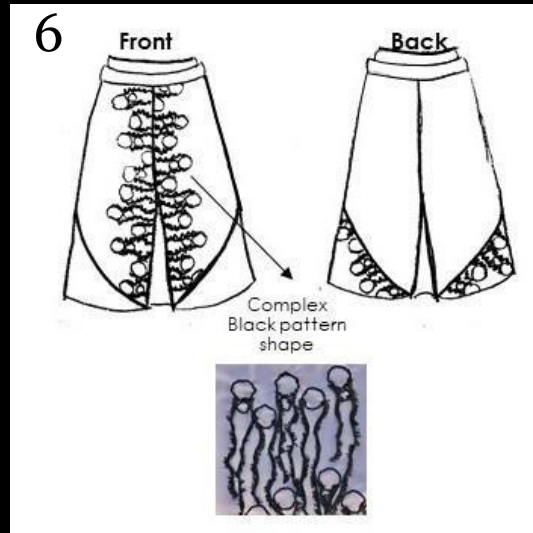
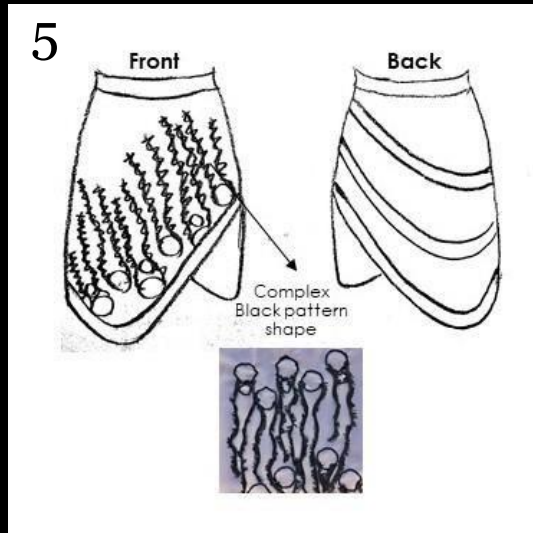
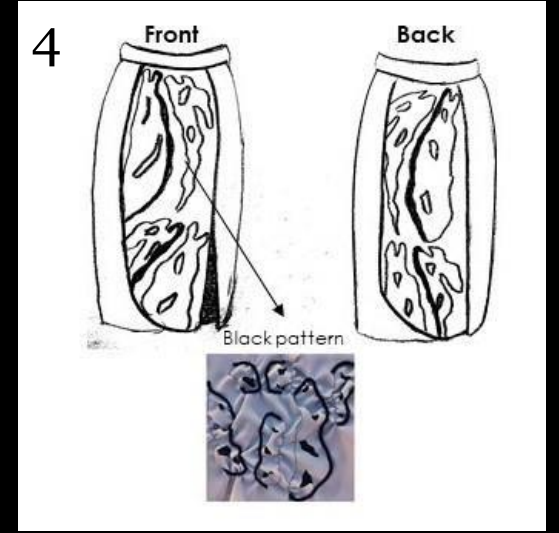
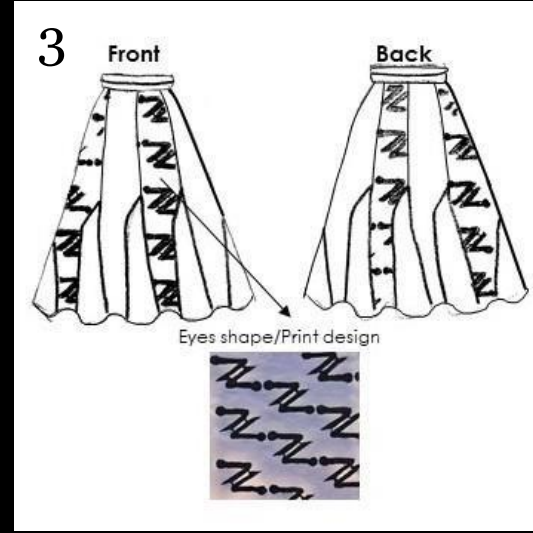
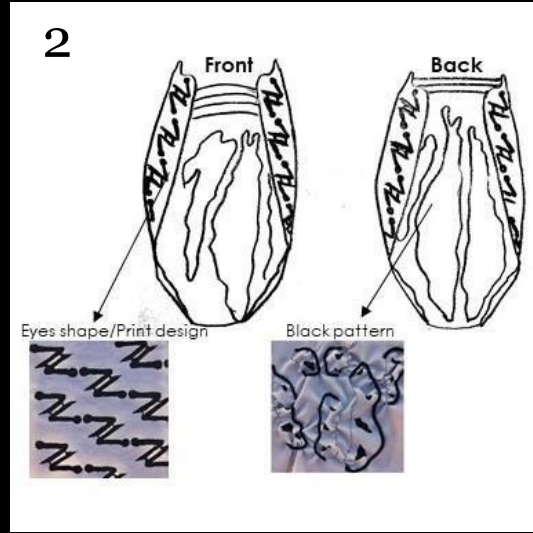
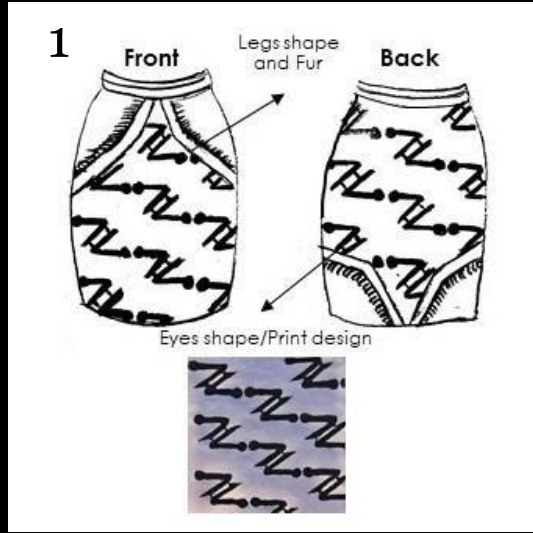


Weaving

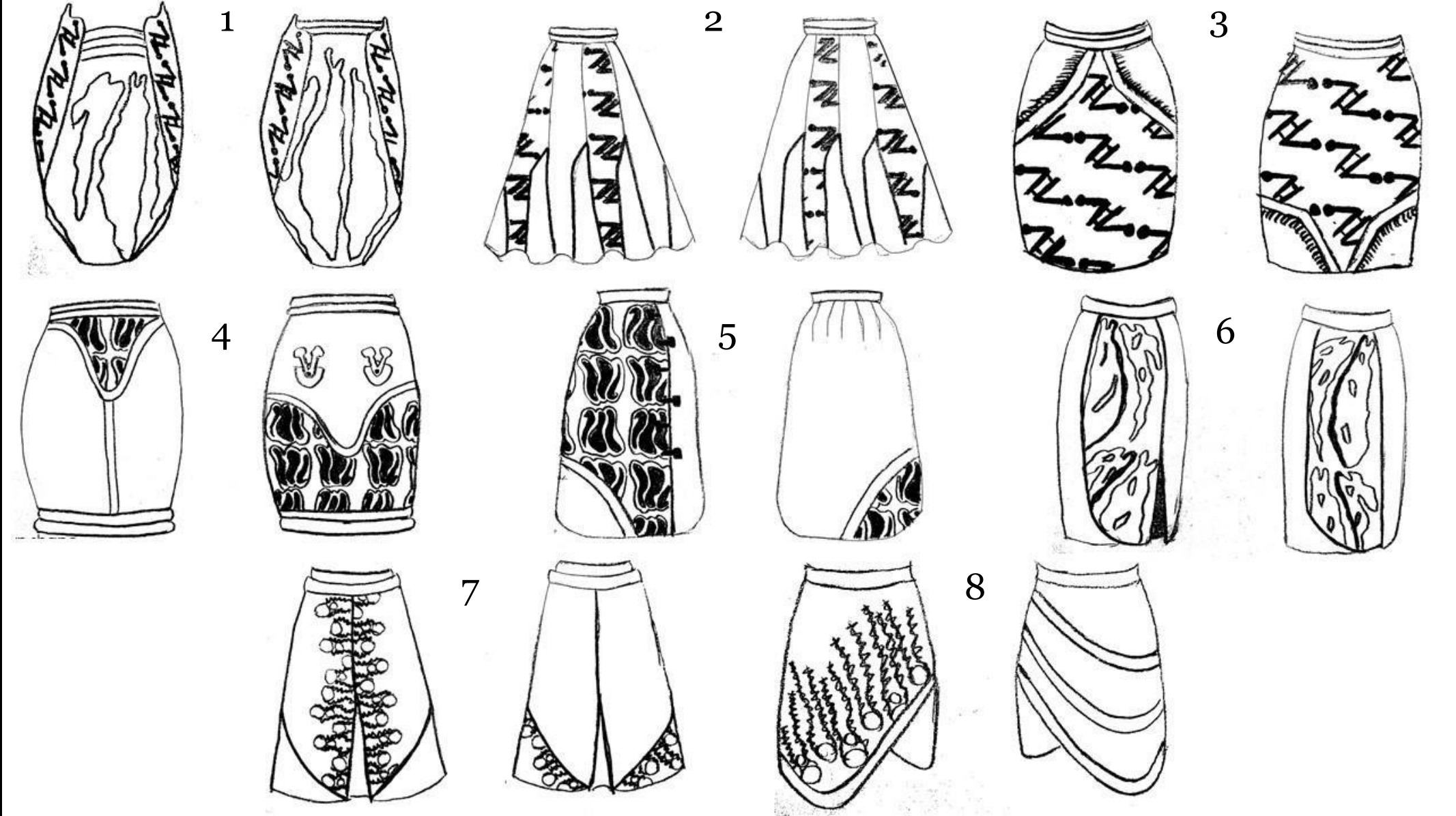


Weaving

Concept Development – Design Development



Final Design Range

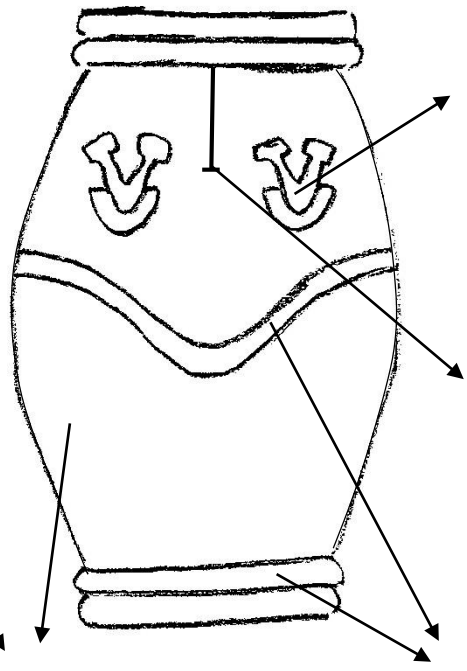
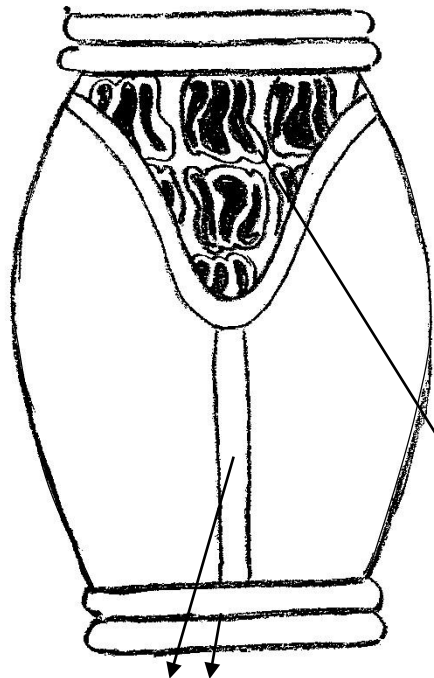


Final Design



Front

Back



Velcro



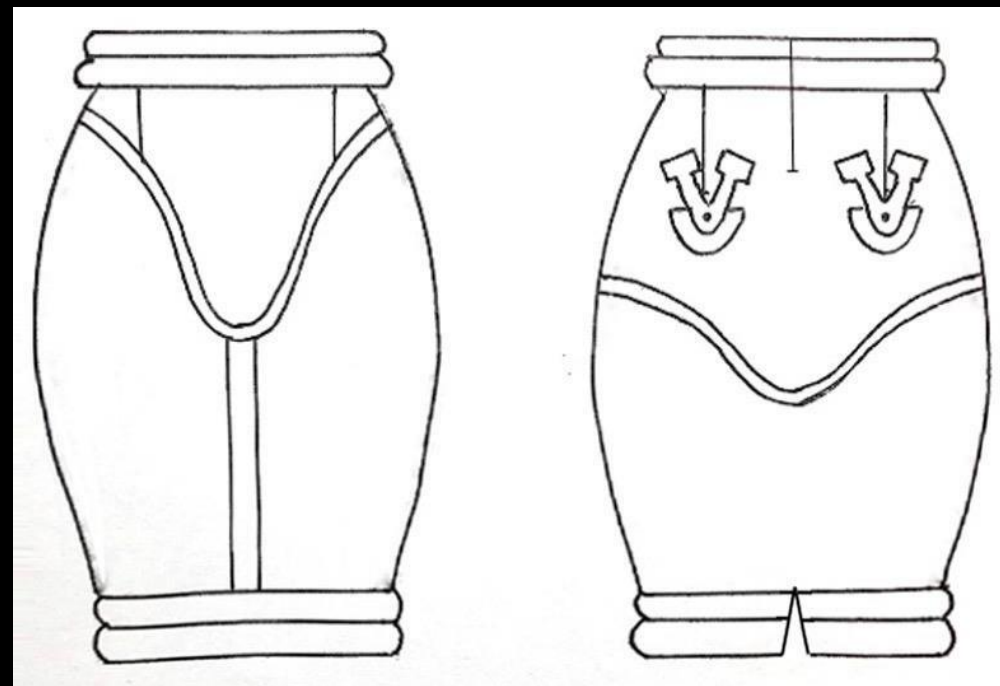
Invisible zipper



Wadding



Technical Drawing



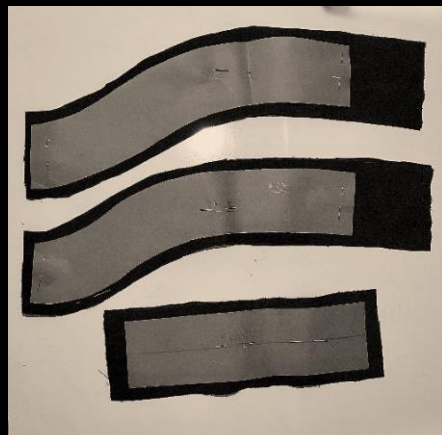
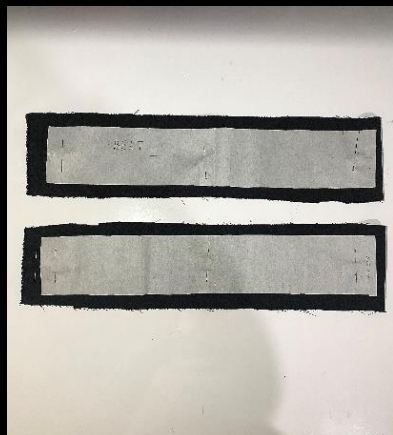
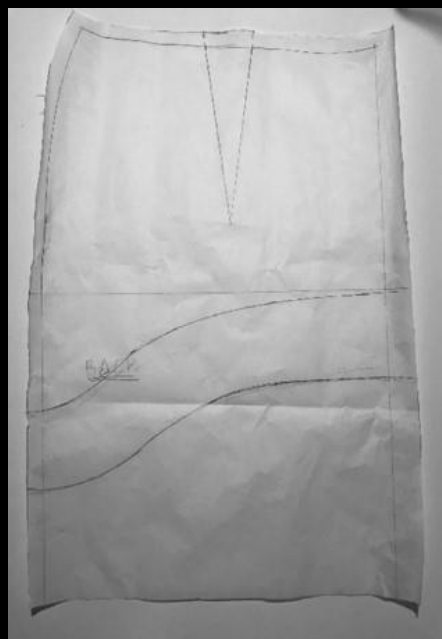
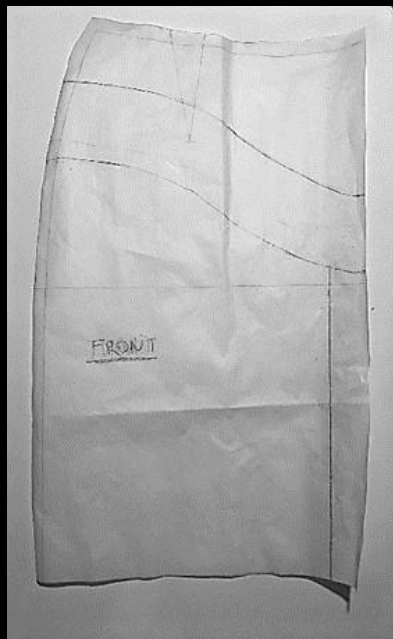
Black Nylon



White Denim



Production Process



Patterns

Pockets

Printing

Final Design – Photoshoot

